

UF-342, Weimer Hall Expansion

Project: UF 342 Weimer Hall Expansion

Location: Gainesville, FL

Budget: \$20,000.

- The committee will select one finalist then conduct discussions with that artist, which may lead to a request for multiple design proposals that fit the given budget. Mediums such as graphic design (vinyl) or murals are strongly encouraged. Themes can include *communication, language*, or other ideas reflected in the College of Journalism.

Deadline For Entries: Received by June 6, 2012, at 5:00pm.

- Estimated timeframe for selection of artist – middle of June
- Estimated timeframe for artist to provide proposal – beginning of August
- Goal for installation of artwork – beginning of November

Criteria to Apply: Artist has met at least (2) of the following:

- The artist has completed public commissions similar in budget
- The artist's works are in major public, private, corporate, or museum collections
- The artist has receive awards, grants, or fellowships
- The artist has had a one-person exhibition in a museum in the past five years

Required Materials:

- **Statement:** Briefly explain why your artwork is perfect for this site and how the submitted images relate to this project.
- **Resume:** Current, professional resume emphasizing above criteria
- **ID Sheet:** Image identification pages that provide for each image: image number, thumbnail image, title of work, medium, dimensions, date, price of work
- **Images:** 5 – 20 digital images on CD.
 - o **Preferably in Powerpoint, each image file should be named with the artist's last name, Image number on ID Sheet, and artwork title. If the image is a detail, please indicate that as well.**
 - o CD can be in a protective case and must be labeled with artist's name and project name.
 - o When naming the file, please avoid characters: / \ " ' * ; - ? [] () ~ ! \$ { } < > #
 - o Images should be in .JPG format with a minimum resolution of approximately 800x600 pixel maximum resolution of approximately 1900x1500.

- Artwork with sound or motion may be submitted as short Quicktime files.
- We do not accept digitally watermarked images.

Tips For Submission: www.arts.ufl.edu/asb

Mail Entries To:

Art in State Buildings
UF-342, Weimer Hall Expansion
UF College of Fine Arts
PO Box 115803
Gainesville, FL 32611

Send Express Entries To:

Art in State Buildings
UF-342, Weimer Hall Expansion
UF College of Fine Arts
400 SW 13th Street
(PO Box 115803)
Gainesville, FL 32611

Questions? Contact:

Anna Heineman
(352) 273-3045
pubart@arts.ufl.edu

For more information about the UF-342, Weimer Hall Expansion,
visit the UF Facilities, Planning, and Construction website at
<http://www.facilities.ufl.edu/prjlist.php>

UF-342, Weimer Hall Expansion

PROJECT OVERVIEW for ART IN STATE BUILDINGS

The Weimer Hall Expansion will be a “game changer” for the College of Journalism and Communications at the University of Florida. The existing facility, originally built in 1980 with significant additions in 1990 and 2001, houses the second largest undergraduate journalism program in the nation, with departments in Advertising, Public Relations, Journalism and Telecommunications. Weimer Hall is also home to the University Athletic Association’s GatorVision, a Radio Reading Service, and six media properties (four radio stations and two television stations) that are operated by the College and provide students unparalleled opportunities for real-world experience.

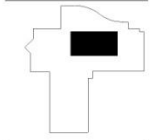
Over time, and in keeping with how the journalism world traditionally worked, the building was carved into separate areas for each of the various mediums – print, radio, TV, etc. – each with its own work spaces, production facilities, and newsrooms. Now, though, media production is more collaborative, blended, and *converged* ... where content is largely developed in one workspace, then tailored and refined for each medium (radio, TV, print, web, etc.). Large national news organizations like the Associated Press and NPR have created “convergence newsrooms” to facilitate this new method, so this project seeks to create the same sort of environment so students are prepared for a more team-oriented approach to news gathering, development, and production.

The project will demolish existing space, create new space, and renovate existing adjacent space to create a two-floor Convergence Newsroom that features (4) open workstation “pods” for web, radio, TV, and sports journalism; a central “Superdesk” that serves as an operations center; editing and production areas; classroom space; and offices and meeting space ... all in an open environment that seeks to promote interaction and collaboration. Indirect daylight is provided to both floors by a clerestory that feeds an open atrium, and monumental stairs at each end of the Convergence Newsroom help enliven the space and encourage vertical interaction.

The Newsroom will serve as both a teaching/learning environment and a true/real production facility since the College’s radio and TV stations serve as important community news sources. As such, the Newsroom will be capable of remaining active even if normal electrical service is interrupted.

One highly visible opportunity for public art is targeted:

Atrium Fascia Between 3rd Floor and Clerestory. A drywall “ring” of varying height encircles the two-story atrium space and provides an opportunity for continuous or occasional images or graphics that are visible from all or most 2nd and 3rd floor locations.



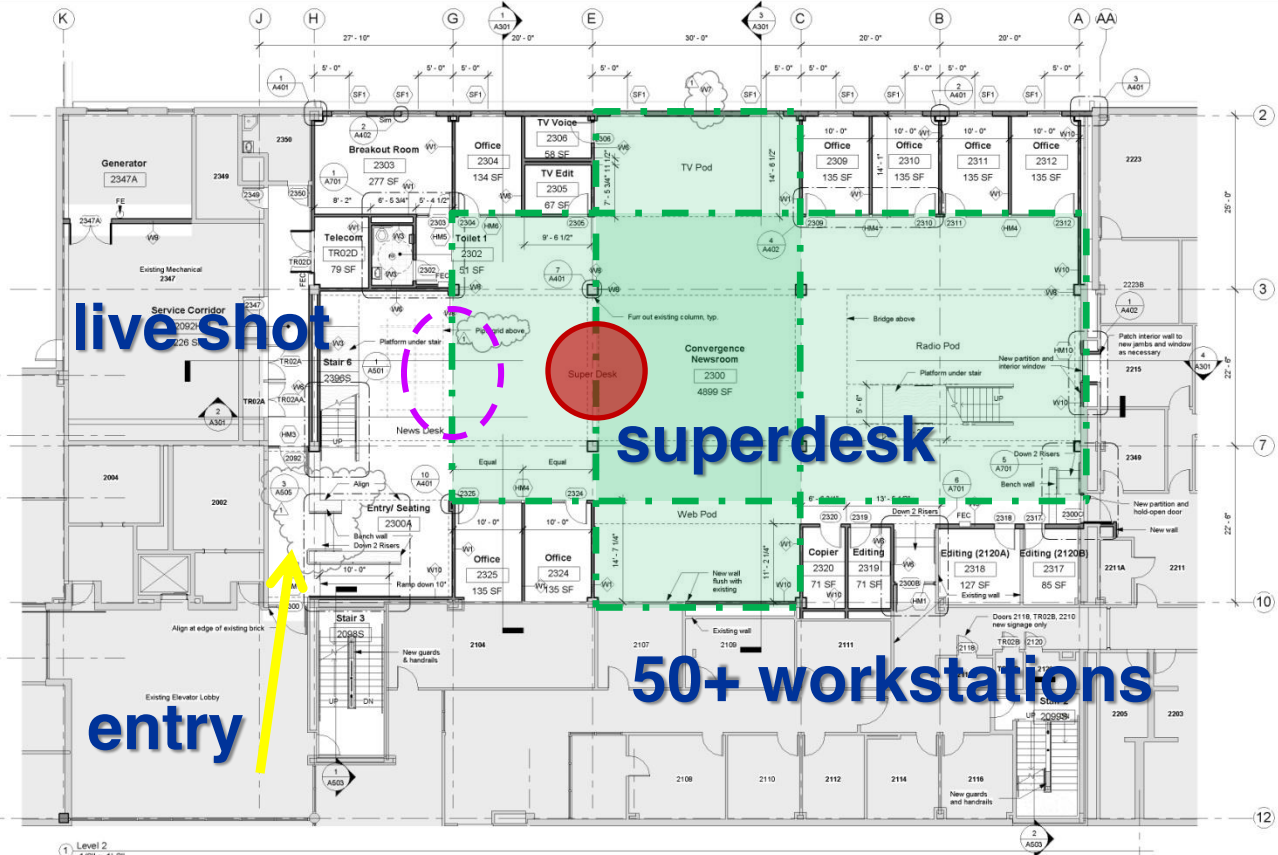
UP-342
Weimer Hall Expansion
College of Journalism & Communications
University of Florida
Facilities Planning & Construction
232 Stadium / PO Box 115050
Gainesville, FL 32611

Project Number 1101.00
Distribution Date
100% Construction Documents 09.21.2011
Confirmed Bid Documents 11.04.2011
Revision Schedule
Confirmed Bid Documents 11.04.2011

Level 2 Plan



A102



- W1 Interior, Non-rated
Gypsum board, Type X
3 5/8" Metal studs
- W2 Interior, 1-hour rated per UL 454
Gypsum board, Type X
3 5/8" Metal studs
- W3 Interior, Furring, Non-rated
Gypsum board, Type X
Sound attenuation batts at hollow rooms
- W4 Interior, Non-rated
6" Metal studs
Gypsum board, Type X
- W5 Interior, 1-hour rated per UL 454
Gypsum board, Type X
Sound attenuation batts at hollow rooms
- W6 Interior, Non-rated Minimum STC 50
3 5/8" Metal studs on resilient channels
Gypsum board, Type X
Thermal insulation
- W7 Exterior, Non-rated
Gypsum board, Type X
- W8 Interior, Non-rated
Metal furring
Gypsum board, Type X
Sound deadening board
- W9 Interior, Non-rated Minimum STC 55
6" Metal studs on resilient channels
Sound deadening board
Gypsum board, Type X
- W10 Interior, 1-hour rated per UL 415
4" C-H Metal studs
1" Gypsum liner panels

Wall Types Legend
3/4" = 1'-0"

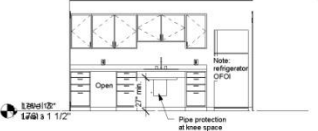
- Legend
- APC-1 Acoustical panel ceiling, suspended
 - CRP Carpet
 - CT Ceramic tile
 - EXT Existing
 - GYP BD Gypsum board
 - R Rubber tile (Resilient)
 - RWB Resilient wall base
 - STC Stone/brick
 - RS RedSpec backboards on gypsum board

Level	Number	Name	Floor Finish	Wall Finish				Base Finish	Ceiling Finish	Comments
				North	East	South	West			
Level 2	2318	Editing (2120A)	CPT	GYP BD	GYP BD	GYP BD	GYP BD	RWB	APC-1	Access Floor
Level 2	2317	Editing (2120B)	CPT	GYP BD	GYP BD	GYP BD	GYP BD	RWB	APC-1	Access Floor
Level 2	2302	Toilet 1	CT	CT	CT	CT	CT	CT	APC-2	Floor Lightweight Conc Fill
Level 2	TR02D	Telecom	VCT	RS	RS	RS	RS	RWB	EXP	Floor Static-Dissipative VCT
Level 2	2319	Editing	CPT	GYP BD	GYP BD	GYP BD	GYP BD	RWB	APC-1	Access Floor
Level 2	2320	Copier	CPT	GYP BD	GYP BD	GYP BD	GYP BD	RWB	APC-1	Access Floor
Level 2	2324	Office	CPT	GYP BD	GYP BD	GYP BD	GYP BD	RWB	APC-1	Access Floor
Level 2	2312	Office	CPT	GYP BD	GYP BD	GYP BD	GYP BD	RWB	APC-1	Access Floor
Level 2	2311	Office	CPT	GYP BD	GYP BD	GYP BD	GYP BD	RWB	APC-1	Access Floor
Level 2	2310	Office	CPT	GYP BD	GYP BD	GYP BD	GYP BD	RWB	APC-1	Access Floor
Level 2	2309	Office	CPT	GYP BD	GYP BD	GYP BD	GYP BD	RWB	APC-1	Access Floor
Level 2	2308	TV Voice	CPT	GYP BD	GYP BD	GYP BD	GYP BD	RWB	APC-1	Access Floor
Level 2	2304	Office	CPT	GYP BD	GYP BD	GYP BD	GYP BD	RWB	APC-1	Access Floor
Level 2	2303	Breakout Room	CPT	GYP BD	GYP BD	GYP BD	GYP BD	RWB	APC-1	Access Floor, Impact GYP BD
Level 2	2305	TV Edit	CPT	GYP BD	GYP BD	GYP BD	GYP BD	RWB	APC-1	Access Floor
Level 2	2092H	Service Corridor	EXT	GYP BD	EXT	EXT	EXT	EXT	APC-2	Existing, New North Wall, Paint all Walls
Level 2	2300	Convergence Newsroom	CPT	GYP BD	GYP BD	GYP BD	GYP BD	RWB	Varies	APC-1 unless otherwise noted, see RCP; Access Floor, Impact GYP BD, No Base at Wood Bench Walls
Level 2	2325	Office	CPT	GYP BD	GYP BD	GYP BD	GYP BD	RWB	APC-1	Access Floor
Level 2	2347A	Generator	EXT	EXT	EXT	GYP BD	EXT	EXT	EXP	Existing, New Partition at East
Level 2	2099S	Stair 2	RT							Existing, New Rails and Guards
Level 2	2098S	Stair 3	RT							Existing, New Rails and Guards
Level 2	2385S	Stair 6 (Stair 7 similar)	RT							Rubber Tile Treads, Perforated Metal Risers
Level 2	2300A	Entry/Seating	CPT	GYP BD	GYP BD	GYP BD	open	RWB	APC-1	Access Floor, No Base at Wood Bench Walls

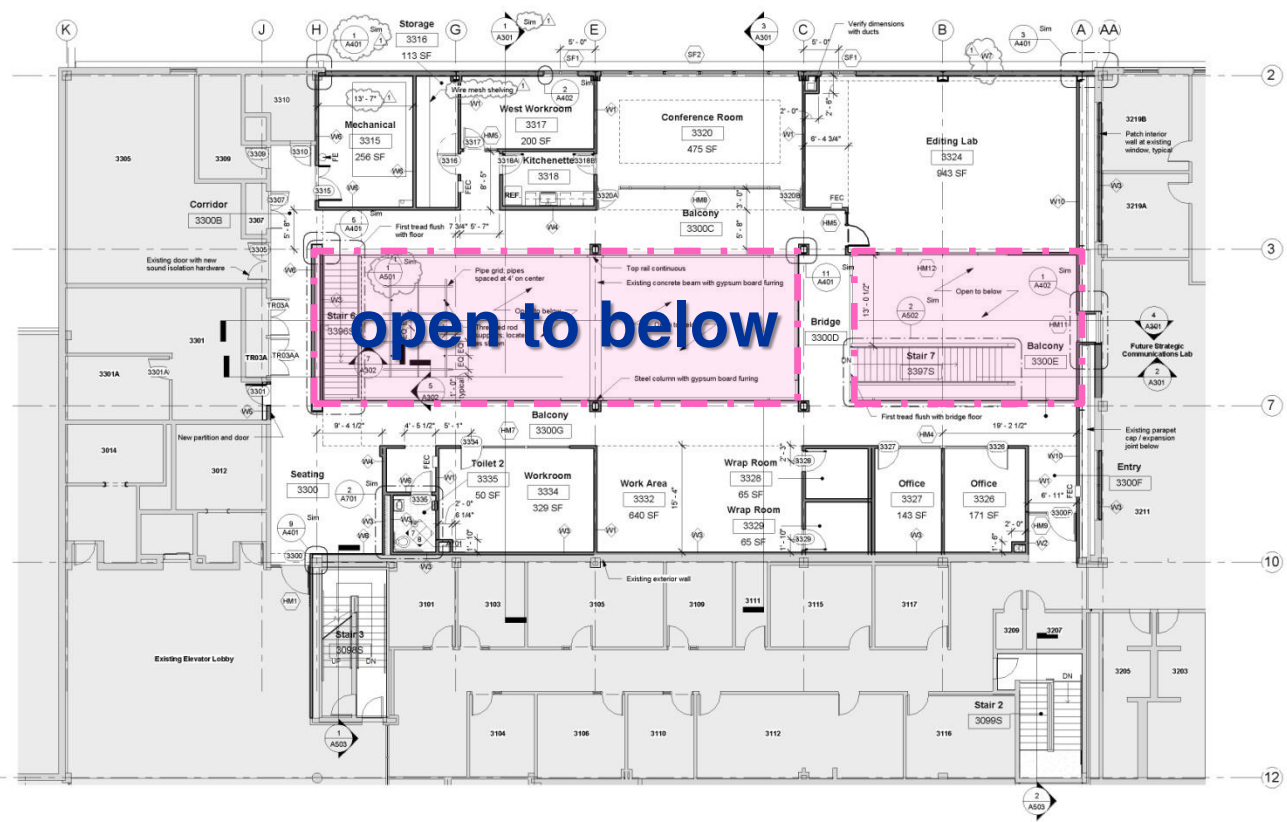
level 2

- W1 Interior, Non-rated
Gypsum board, Type X
Sound attenuation batts at toilet rooms
3 5/8" Metal studs
Gypsum board, Type X
- W2 Interior, 1-hour rated per UL 454
Gypsum board, Type X
3 5/8" Metal studs
- W3 Interior, Non-rated
Interior Furring, Non-rated
Gypsum board, Type X
Sound attenuation batts at kitchenette
6" Metal studs
Gypsum board, Type X
- W4 Interior, Non-rated
6" Metal studs
Gypsum board, Type X
- W5 Interior, 1-hour rated per UL 454
Gypsum board, Type X
Sound attenuation batts
3 5/8" Metal studs
- W6 Interior, Non-rated
Sound deadening board
Gypsum board, Type X
Thermal insulation
6" Structural metal studs
- W7 Exterior, Non-rated
Gypsum board, Type X
Gypsum board, Type X
Metal furring
- W8 Interior, Non-rated
Gypsum board, Type X
Sound deadening board
Sound attenuation batts
6" Metal studs on resilient channels
- W9 Interior, Non-rated
Sound deadening board
Gypsum board, Type X
Minimum STC 55
- W10 Interior, 1-hour rated per UL 415
4" C-H Metal studs
1" Gypsum liner panels

Wall Types Legend
3/4" = 1'-0"



Interior Elevation - Kitchenette
1/4" = 1'-0"

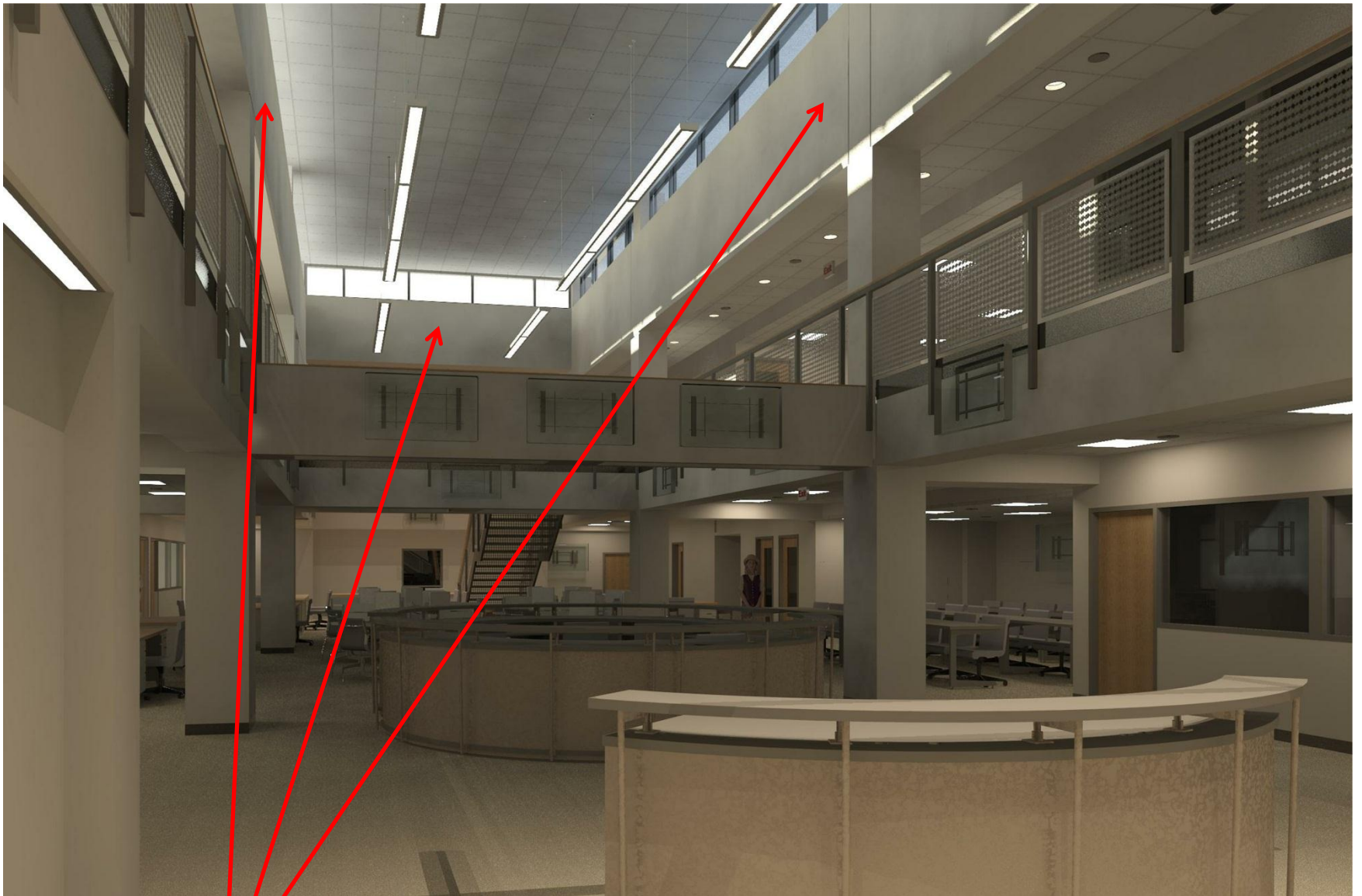


1 Level 3 ALTERNATE
1/8" = 1'-0"

Level	Number	Name	Floor Finish	Wall Finish				Base Finish	Ceiling Finish	Comments
				North	East	South	West			
				Room Finish Schedule Level 3 ALTERNATE						
Level 3	3320	Conference Room	CPT	GYP BD	GYP BD	GYP BD	GYP BD	Wood	APC-1*	*GYP BD soffits @ 8'-0" AFF
Level 3	3324	Editing Lab	CPT	GYP BD	GYP BD	GYP BD	RWB	APC-1	Impact GYP BD	
Level 3	3332	Work Area	CPT	GYP BD	GYP BD	GYP BD	RWB	APC-1	Impact GYP BD	
Level 3	3315	Mechanical	SC	GYP BD	GYP BD	GYP BD	RWB	EXP		
Level 3	3300D	Bridge	CPT				RWB	APC-1	Impact GYP BD	
Level 3	3300E	Balcony	CPT	GYP BD	GYP BD	GYP BD	RWB	APC-1	Impact GYP BD	
Level 3	3300B	Corridor	CPT	GYP BD	GYP BD	GYP BD	RWB	APC-1	Impact GYP BD	
Level 3	3300	Seating	CPT	GYP BD	GYP BD	GYP BD	RWB	APC-1	Impact GYP BD	
Level 3	3300G	Balcony	CPT	GYP BD	GYP BD	GYP BD	RWB	APC-1	Impact GYP BD	
Level 3	3300F	Entry	CPT	GYP BD	GYP BD	GYP BD	RWB	APC-1	Impact GYP BD	
Level 3	3300C	Balcony	CPT	GYP BD	GYP BD	GYP BD	RWB	APC-1	Impact GYP BD	
Level 3	3099S	Stair 2								Existing, New Rails and Guards
Level 3	3099S	Stair 3								Existing, New Rails and Guards

Level	Number	Name	Floor Finish	Wall Finish				Base Finish	Ceiling Finish	Comments
				North	East	South	West			
				Room Finish Schedule Level 3 ALTERNATE						
Level 3	3397S	Stair 7	RT							Rubber Tile Treads, Perforated Metal Risers
Level 3	3306S	Stair 6	RT							Rubber Tile Treads, Perforated Metal Risers
Level 3	3318	Kitchenette	CT	GYP BD	GYP BD	GYP BD	GYP BD	CT	APC-1	
Level 3	3317	West Workroom	CPT	GYP BD	GYP BD	GYP BD	GYP BD	RWB	APC-1	Impact GYP BD
Level 3	3316	Storage	CPT	GYP BD	GYP BD	GYP BD	GYP BD	RWB	APC-2	
Level 3	3334	Workroom	CPT	GYP BD	GYP BD	GYP BD	GYP BD	RWB	APC-1	Impact GYP BD
Level 3	3328	Wrap Room	CPT	GYP BD	GYP BD	GYP BD	GYP BD	RWB	APC-1	
Level 3	3327	Office	CPT	GYP BD	GYP BD	GYP BD	GYP BD	RWB	APC-1	
Level 3	3326	Office	CPT	GYP BD	GYP BD	GYP BD	GYP BD	RWB	APC-1	
Level 3	3329	Wrap Room	CPT	GYP BD	GYP BD	GYP BD	GYP BD	RWB	APC-1	
Level 3	3335	Toilet 2	CT	CT	CT	CT	CT	CT	APC-1	

level 3



**“The Ring” encircles atrium space
between 3rd floor and clerestory**

Looking North from 2nd Floor
(live shot desk in foreground)



Section looking north



East and West “ring” walls = 68’ long X 6’ high
North and South “ring” walls = 20’8” long X 4’10” high

Total Square Footage = 1,016

Section looking east



“The Ring” under construction – west side



“The Ring” under construction – looking north