



Summer 2009

Special points of interest:

- Discover UF's various Fine Arts venues!
- Health insurance for graduate assistants
- Financial aid information
- Points of interest in Gainesville and Alachua County

Inside this issue:

Graduate School Orientation	2
School of Music Orientation	2
Immunizations/ Health Services	3
Student ID: Gator 1 Card	4
Financial Aid	5
Relcoating to Gainesville	6
Final Checklist/ Resources	7

Hello! We look forward to your arrival!

We can hardly wait to meet you this summer, or during the orientation programs at the beginning of the fall semester.

Not only do we have great expectations for you, but we are excited to share the wonderful opportunities you'll have during your studies at the University of Florida in Gainesville, Florida!

The Graduate School provides some excellent links from their website that you may want to begin exploring. Visit them online at <http://gradschool.ufl.edu/students/introduction.html>. Links include information about living in Gainesville, costs, services, housing, financial aid, the graduate catalog, international student information, and much more.

The University Office of Admissions also provides information to help you become better acquainted with UF. Visit <http://www.admissions.ufl.edu/grad/> and follow the links under "Admitted Students." A complete listing of Admissions sites is available at <http://www.admissions.ufl.edu/sitemap.html>.



The Century Tower Carillon

Important Contacts

SCHOOL OF MUSIC ADVISING:

Dr. Leslie Odom,
Graduate Coordinator
and Doctoral Advisor
221 MUB
lodom@ufl.edu
352.273.3172

Dr. Jonathan Helton,
Master's Advisor
307 MUB
jhelton@ufl.edu
352.273.3179

COLLEGE OF FINE ARTS GRADUATE ASSISTANT/ FELLOWSHIP MANAGER:

Mr. George Trucano
114 FAA
gtrucano@ufl.edu
352.273.0320

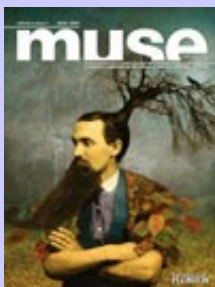
GRADUATE ADMISSIONS & ACADEMIC PROGRAMS:

Ms. Laura Robertson
lrobertson@arts.ufl.edu
Mr. Phillip Klepacki
gradadmissions@arts.ufl.edu
207 AUD
Tel. 352.846.3425
FAX 352.846.3446



Curtis M. Phillips
Center for the
Performing Arts

Muse Magazine is a college-wide publication that provides information about recent activities of faculty, students, and staff of UF's College of Fine Arts. Launched in the spring of 2005, *Muse* is distributed to friends of the college. Link to it online at <http://www.arts.ufl.edu/publications/publications.asp>.



Muse Magazine,
Volume 3, Issue 1
(Winter 2008)

College of Fine Arts Venues

Add to your UF experience with choices almost every day of plays, concerts, international performances, world-class artists, or art exhibits in one of our exciting venues.

Curtis M. Phillips Center for the Performing Arts

hosts international and national touring performances as well as local groups. Recent performances include *Chicago*, the Kronos Quartet, Garrison Keillor, Bob the Builder, Celtic Woman, John Williams, The Peking Acrobats, Christian McBride Band, Hilary Hahn, *STOMP*, Riverdance, Carol Burnett, Itzhak Perlman,

Bryan Adams, the Soweto Gospel Choir, the National Philharmonic of Russia, Ravi Shankar, and Laurie Anderson. Visit <http://www.performingarts.ufl.edu> for information on upcoming events.

Constans Theatre provides 415 seats in the heart of the UF campus, at the Nadine McGuire Theatre and Dance Pavilion. See <http://www.arts.ufl.edu/theatreanddance> for Theatre and Dance events.

The **Harn Museum of Art** is the largest museum between Orlando and

Atlanta. Events include art films, performances, workshops, and lectures from visiting art historians. Visit <http://www.harn.ufl.edu/> for exhibition listings.

The **College of Fine Arts Calendar of Events**,

including performances, exhibits, and lectures from the Schools of Music, Theatre & Dance, and Art & Art History, is online at <http://www.arts.ufl.edu/events.asp>.

The **University Galleries** website lists exhibits in UF's three galleries. Visit <http://www.arts.ufl.edu/galleries> for more information.

Graduate School Orientation Sessions

Orientation for new graduate students takes place at the start of fall and spring semesters every academic year to acquaint you with UF personnel, services, policies and procedures as a newcomer to the University of Florida.

Monday, 17 August

Student Services and Organization Tables Display:
J. Wayne Reitz Union (JWRU)

Graduate Student Orientation: JWRU

International Graduate Student Orientation:
JWRU

Graduate Teaching Assistant Orientation, Part 1: JWRU

Tuesday, 18 August

Graduate Teaching Assistant Orientation, Part 2: JWRU

Wednesday, 19 August

Academic Written English Screening Test for International Students

SPEAK Test for International Students

Times and locations will be confirmed later this summer—check back at <http://gradschool.ufl.edu/students/orientation.html> for more information.

School of Music Orientation and Placement Exams

In addition to the sessions sponsored by the Graduate School, the School of Music will hold its own **required** orientation session and administer diagnostic exams in music history and music theory.

Date TBA

Music History placement exam: 8:00a-12:00p; Room TBA, Music Building

Music Theory placement exam: 1:00p-4:00p; Room TBA, Music Building

Friday, 21 August

School of Music Graduate Student Orientation: 1:00p-4:00p; Room 120, Music Building

Final Transcripts

If you have just graduated, or did not send one previously, you are required to submit an OFFICIAL final transcript that includes ALL credit and grades earned for your bachelor's degree (and master's, if applicable). This transcript should also include the degree statement (which states what degree you earned in what program on what specific date). You will have a hold placed on your

record and will be unable to register during the fall semester if the University of Florida does not receive this official final transcript.

You may email gradadmissions@arts.ufl.edu to confirm if we have the final, official transcript.

****If you are just graduating this term, please be sure that the final grades and degree statement are posted on the transcript before having it*

sent—you can confirm this with your institution's registrar.

Please send your final, official transcript to:

**Office of Admissions
S201 Criser Hall
PO Box 114000
University of Florida
Gainesville, FL 32611-4000**



*Criser Hall
(Admissions;
Registrar; Financial
Services)*

Medical Immunizations

To attend the University of Florida you MUST complete the screening health history questionnaire AND show proof of immunity to measles (2 shots required) and rubella (1 shot required). In addition, students coming to UF from outside the United States must have a skin test for tuberculosis within six months of arrival into the U.S. You will receive a yellow Immunization Form

from the Admissions Office. If you do not, or have misplaced your copy, you may review the policies (<http://shcc.ufl.edu/medical/immune.shtml>) and access the form (<http://shcc.ufl.edu/medical/pdf/acl-002a.pdf>) online.

If instructions on the Immunization Form were followed, clearance for registration should work

smoothly. As a precaution, you should keep your own copy of the proofs and the form that you submit, and bring those with you. If your records are incomplete for any reason, you will be able to acquire necessary immunizations once you arrive on campus. If you mailed or faxed records, or have special questions or concerns, you may call 352.392.1161, and press '3' to reach the Immunization Clinic.

***Your registration
CANNOT proceed
without completion
of the
Immunization form.***

More on Student Health Services

The Student Health Service provides primary medical care, preventative medicine, health screening programs and mental health consultation and counseling. These services are available to all full-time students. The Student Health Care Center (SHCC), housed in the Infirmery (centrally

located on campus), consists of an out-patient clinic and an in-patient unit.

A health fee is charged as a part of the tuition paid by all students—***it is not health or accident insurance.*** This fee covers outpatient visits to the infirmery, some

laboratory tests and some medications. If more complicated diagnostic study or hospitalization is required, additional charges are made.

<http://shcc.ufl.edu>



*Student Health Care Center/
Infirmery*

Health Insurance: Gator GradCare

GREAT NEWS!!! A health insurance benefit program is part of the salary and benefits package for all graduate assistants and fellows. Please read the information provided by the Office of Human Resources at <http://www.hr.ufl.edu/benefits/gatorgradcare/default.asp>.

Enrollment is NOT automatic—you will find enrollment information at the above website as well.

Students not on a graduate assistantship may also purchase health insurance sponsored through Student Government. Call the Insurance Office of the Student Health Care Center at 352.392.1161 x284, or visit them online at <http://www.shcc.ufl.edu/insurance.shtml>.



UF's Gator 1 Card

Student ID: Gator 1 Card

The Gator 1 Card is the official picture ID for the University of Florida. It is **required of all students** and you may be denied university services if you do not have one.

To get your Gator 1 Card, go to the ID Card Services office, located in Room G071 of the UF Bookstore & Welcome Center (adjoining the J. Wayne Reitz Union).

You will need a photo ID, such as a driver's license, military ID, or passport.

If you do not have a photo ID, you can go to Station #2 at the Registrar's Office in Criser Hall for a notarized statement affirming your identity. You will also need your Social Security card, military ID, insurance card, Selective Service card, or any document from the

University that shows your Social Security number printed on it.

The Gator 1 Card costs \$15, which can be paid by cash, check, debit, or credit.

For more information, visit <http://www.gator1card.ufl.edu>, or call 352.392.8343.



Computer Sciences and Engineering Building

Computing Services

GatorLink is a computer ID and suite of services that allows access to a variety of UF campus computing resources. Every student is **required** to get a GatorLink ID.

Some free services are available to students; other campus services require a GatorLink sign-on to authenticate your identify,

and there are some fee-based services.

To set up your GatorLink account, visit <http://www.gatorlink.ufl.edu>. You'll need your UFID number, which you can obtain at <https://was.isadmin.ufl.edu/webapp/baiudufi2tSSNTranslator>.

Students are able to forward their GatorLink email address to any valid email address, on or off campus. Official correspondence from the University is sent via the Gatorlink email; students selecting the forwarding option are still responsible for regularly checking for any mail sent to their GatorLink email address.

Financial Aid—Student Loans

Students applying for loans and work through Student Financial Affairs (SFA) should understand that fee waivers are included in aid packages. **You are responsible for notifying SFA of all such assistance you receive from any source. Receiving fee waivers affects eligibility for aid through SFA.**

At the University of Florida, graduate students may apply for the following student loans: Federal Direct Stafford/Ford Loans (subsidized and unsubsidized); University of Florida Institutional Loans; and Federal Perkins Loans. These programs offer long-

term, low-interest loans that must be repaid when the borrower graduates, withdraws, or drops to less than half-time enrollment.

In general, students may borrow up to the cost of attendance minus any other financial aid per academic year at interest rates from 5% to 8.25% annually. Some loans are based on financial need; others are not. The actual amount of each loan is based on financial need and/or program limits.

To apply, complete the Free Application for Federal Student Aid (FAFSA) at <http://www.fafsa.ed.gov>. Students are advised to

apply as early as possible, observing the deadlines posted at <http://www.sfa.ufl.edu>.

You should always seek financial aid advice from your assigned aid counselor, as requirements are complex and beyond the expertise of the college office. **The key to a stress-free semester is to begin the semester with other funds (perhaps available credit that you can pay back when your aid is disbursed).** To learn who your financial aid adviser is, visit <http://www.sfa.ufl.edu/infoserv/adviser.html>



The Baughman Center, on the shore of Lake Alice

Financial Aid—Part-Time Employment

The University of Florida Office of Student Financial Affairs, located in S-107 Criser Hall, coordinates part-time on-and off-campus employment through the following three employment programs: Federal Work-Study, including the Federal Community Service component; Other Personnel Services (OPS); and off-

campus jobs.

Federal Work-Study jobs are based on financial need; to apply, students should pick up a Gator Aid Application Guide and complete the online FAFSA.

OPS jobs are not based on financial need; to apply, students should go to the Student Employment Office

(within the Student Financial Affairs office).

Off-campus job lists are posted on the job bulletin boards, and students simply need to contact the employers. SFA maintains job bulletin boards for all three programs on the Web at <http://www.sfa.ufl.edu/programs/studentemployment.html>.

Check your financial aid status by logging on to ISIS: <http://www.isis.ufl.edu>

Computer Requirements

Access to and ongoing use of a computer will be required for all students to complete their degree programs successfully. The University of Florida expects each student to acquire computer hardware and software appropriate to his or her degree program.

Competency in the basic use of a computer is a requirement for graduation. Class assignments may require use of a computer, academic advising and registration can be done online, and official university correspondence is often sent via e-mail.

The UF Bookstore offers discount programs on Apple and Dell systems and software; for more information, visit their website at <http://www.bsd.ufl.edu/bookstore/>.



The interior of the University Auditorium, viewed from onstage



Gainesville: A Place for Living and Learning
<http://www.cityofgainesville.org>

New student library orientation sessions are scheduled several times at the beginning of the semester. You may also check out their “Just Getting Started” web guide at any time; visit <http://www.uflib.ufl.edu/jgs/getstart.html>.



The newly renovated Library West.

Relocating to Gainesville—Housing and Services

On-campus housing is quite limited, so you are encouraged to submit applications to the Campus Housing Office early. See <http://www.housing.ufl.edu/> for more information.

Most graduate students live off-campus. Off-campus information can be found at the Campus Housing website, or through the links below. Because parking on campus is extremely limited, you will be much happier if you find an apartment near campus, or near a city bus route. UF students ride free

on all city buses (see <http://www.go-rts.com> for more on city and campus routes).

Off—campus housing:

Apartment Hunters: <http://www.apartmenthunters.com>

Gainesville *Sun* Listings: <http://gainesville.com/section/realestate>.

Gainesville Apartment & Condominium Guide: <http://www.gainesville-rent.com>

Stu’s View: <http://www.stusview.com/>

Banks: <http://www.gainesvillechamber.co>

[m/Chamber_Services-Member_Directory.aspx](http://www.gainesvillechamber.com/Chamber_Services-Member_Directory.aspx) (select “Banks” and/or “Credit Unions” from the drop-down list)

Telephone/Cable/Internet:

AT&T: <http://www.att.com>

Cox Communications: <http://www.cox.com>

Utilities (Electricity, Water/Sewer, Trash, Gas):

Gainesville Regional Utilities (GRU): <http://www.gru.com>

On-campus Dining:

Gator Dining Services: <http://www.bsd.ufl.edu/dining/>

Parking on Campus

Decals or permits are required for parking in all areas of campus between 7:30am and 4:30pm, Monday through Friday, unless indicated otherwise by signage. Decals may be purchased at the Transportation and Parking Services (TAPS) Office located at the corner of Gale Lemerand Drive and Mowry Road. Office hours are 8:00am to 4:30pm, with

special extended hours during rush periods.

Please note that parking is EXTREMELY limited on campus, and purchasing a parking decal does not guarantee access to a parking space. It is highly recommended that you use an alternative form of transportation: many Gainesville roads are equipped with bicycle lanes,

and the Regional Transit Service (RTS) can be ridden for free by showing your Gator 1 Card.

For more information, including maps of the various lots throughout campus, visit <http://www.parking.ufl.edu>.

Note: Students can park during break weeks on campus without a decal. The TAPS website posts information on when restrictions are lifted.

Emergency Contact Information

All students must provide the University with emergency contact information. This must also be verified and/or updated each semester before you can register for the upcoming term.

To update your contact information, go to <http://www.isis.ufl.edu>, and look for the “Update Emergency Contact Info” link under “My Record” in the left-hand menu. (Please note that you will be redirected to myUFL at this point.)

Please take a moment to provide your emergency contact information **before** you meet with your advisor for registration.

Final Checklist

BEFORE YOU ARRIVE IN GAINESVILLE:

- ◇ Final transcript submitted, showing your earned degree(s)
- ◇ Medical immunization verification submitted
- ◇ Gator GradCare enrollment (for graduate assistants/fellows)
- ◇ Payroll forms returned (for graduate assistants/fellows)
- ◇ GatorLink ID for email and computing services established
- ◇ Housing arrangements made
- ◇ Financial aid application submitted (optional)
- ◇ Check ISIS for any holds on your account
- ◇ Graduate Student Orientation dates reserved on calendar
- ◇ School of Music Orientation dates reserved on calendar



Lake Alice, in the heart of the UF campus

WHEN YOU ARRIVE IN GAINESVILLE:

- ◇ Student ID (Gator 1 Card) purchased
- ◇ Textbooks purchased (<http://www.bsd.ufl.edu/bookstore/>)
- ◇ Parking decal purchased (optional)
- ◇ History and Theory placement exam dates TBA
- ◇ Update emergency contact information **BEFORE** registering
- ◇ Advising/registration **AFTER** you have taken the placement exams

ISIS (Integrated Student Information System)

[http://](http://www.isis.ufl.edu)

www.isis.ufl.edu

ANY LINGERING QUESTIONS OR CONCERNS?

Email gradadmissions@arts.ufl.edu—we are available throughout the summer!

RESOURCES/WEBSITES:

- * ISIS (Integrated Student Information System): <http://www.isis.ufl.edu>
- * myUFL: <http://my.ufl.edu>
- * Ask UF—Frequently Asked Questions: <http://www.questions.ufl.edu>
- * UF Website Listing: <http://www.ufl.edu/websites/>
- * College of Fine Arts: <http://www.arts.ufl.edu>
- * UF Libraries: <http://www.uflib.ufl.edu>
- * International Center: <http://www.ufic.ufl.edu>
- * Campus Recreation: <http://www.recsports.ufl.edu>
- * Counseling Center: <http://www.counsel.ufl.edu>
- * Student Financial Affairs: <http://www.sfa.ufl.edu>
- * Graduate Assistants United: <http://www.ufgau.org>
- * Interactive Campus Map: <http://campusmap.ufl.edu>



The UF Bookstore and Welcome Center at the J. Wayne Reitz Union

University of Florida School of Music

PO Box 117900
Music Building
Gainesville, FL
32611-7900

Phone: 352.392.0223
Fax: 352.392.0461

<http://www.arts.ufl.edu/music>



The School of Music continues to grow in stature and influence in all of its disciplines. UF's School of Music was the first in the U.S. to host a session of the International Certificate for Piano Artists and the only one to have its Wind Symphony invited to the World Association of Symphonic Bands and Ensembles Convention in Singapore. The school's Clarinet Ensemble was the first student group ever invited to play at the International ClarinetFest and its choirs performed with several symphonies throughout the U.S. The school also hosts many internationally recognized festivals each year, ranging from the classical Steinway Piano Festival to the avant-garde Electroacoustic Music Festival. These events bring world-class performers in every discipline to the campus for performances, recitals, and residencies that benefit all members of the campus community, and especially students of the school.

The school's students are selected from among the nation's finest young musicians. The level of musicianship and academic accomplishment among faculty and students is very high. The scholarly and creative work of the school's graduate students and faculty is recognized throughout the world. Many faculty members also hold leadership positions on boards of directors of national and international music organizations.

UF at a glance

UF is a major public research university, one of the five largest in the nation. The state's oldest, largest, and most comprehensive university, Florida is among the nation's most academically diverse.

Florida has a long history of established programs in international education, research, and service. The University is a community of outstanding faculty, talented students, and committed staff who learn and work in a stimulating and diverse intellectual environment.

Total Number of Students:
52,271 (36,386 undergraduates; 15,885 graduate/professional students)

Minority Enrollment (African-American, Hispanic-American, Asian-American, and Native American): 14,354

International Students:
6,300

Ration of Men to Women:
47:53

Graduate Degree Programs: 262

Student Organizations:
more than 700

In 1985, UF was admitted to the Association of American Universities (AAU), one of the most prestigious organizations in higher education. UF is the only school in Florida to be a part of AAU.

UF awards almost \$68 million of financial aid annually: \$32 million in student loans and \$36 million in scholarships and grants.

The books in the UF Libraries can fill every seat in Ben Hill Griffin Stadium ("The Swamp") with 45 books. The Swamp seats 90,000 fans and is the fourth largest college stadium in the country.



**IT'S GREAT TO
BE A FLORIDA
GATOR!!!!**